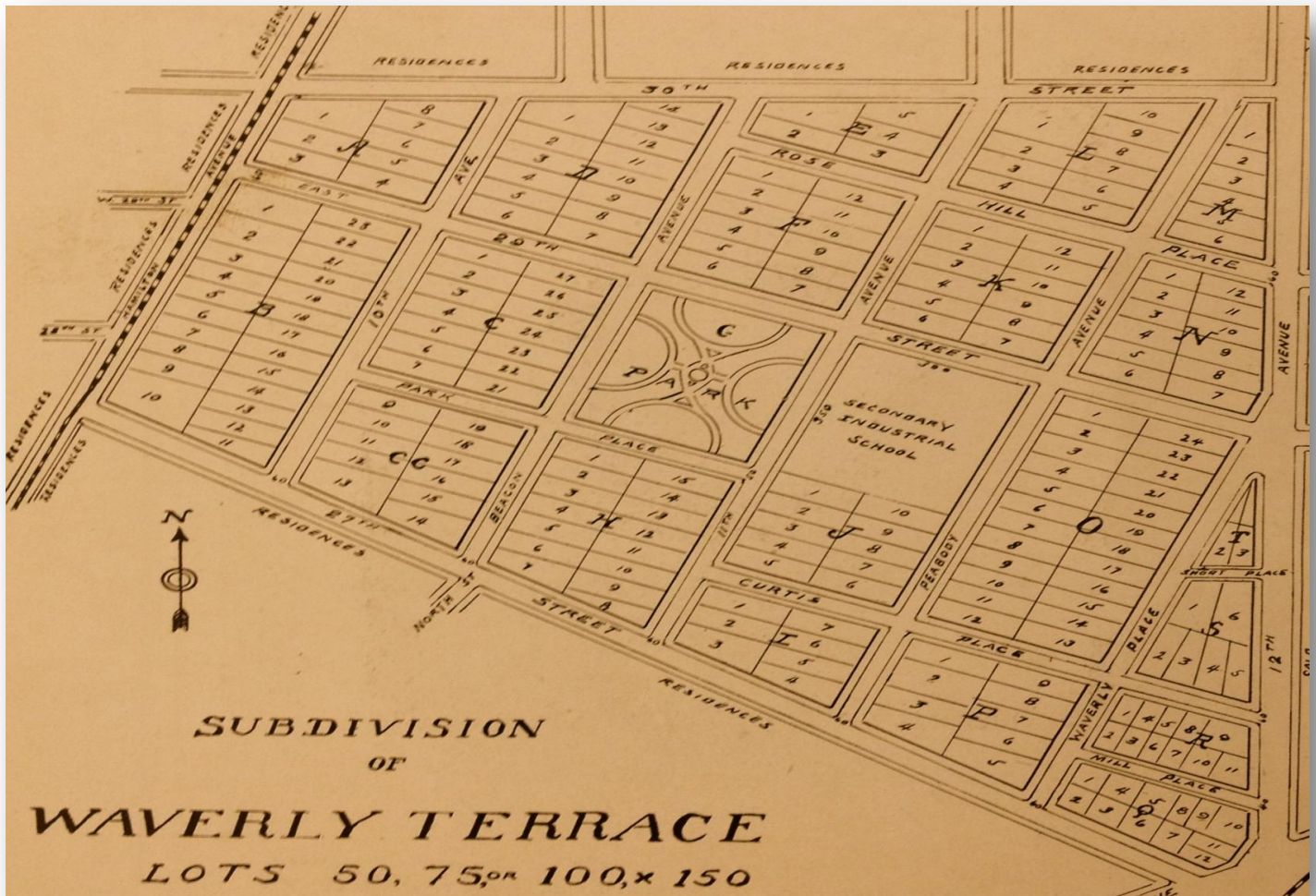


Waverly Terrace: The “Haven of Homes”

Waverly Terrace is a National Register Historic District. It was the first planned suburb in Columbus, location of the nation’s first coeducational industrial school, and home of prominent architect T.W. Smith.



Original layout of Waverly Terrace subdivision. *The Home Book, 1917*

As a planned suburb, the neighborhood was laid out using a grid pattern and included all utilities and an elementary school. The Waverly Terrace community was home to the nation’s first coeducational Industrial School. T.W. Smith, a renowned Georgia architect designed his own home, the neighborhood elementary school, and the local Congregational Church.