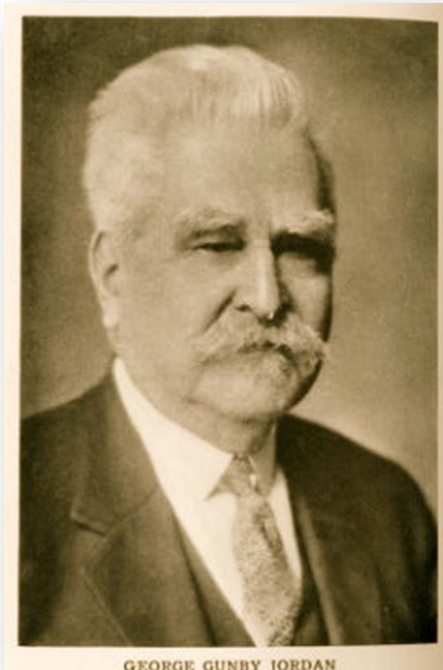


# G. Gunby Jordan & Columbus' First Planned Suburb

“A City in the Making,” *The Home Book*, 1917.



George Gunby Jordan. Archives,  
Chattahoochee Valley Libraries.

George Gunby Jordan (1846-1929) was one of Columbus' most prominent industrialists, bankers, and land owners. Having purchased Waverly Farm, at the northern outskirts of the city, the Jordan Company sub-divided forty-five acres of the tract to create Waverly Terrace.

Built for middle-class purchasers, residents who bought homes in this neighborhood included professionals, small business owners, and skilled tradesmen.

Linked to downtown Columbus by a street car service, Waverly Terrace was the first planned residential suburb in Columbus. The plan included all utilities, water, sewer, and electric power lines. It also included a neighborhood elementary school. The streets were laid out, graded, and included sidewalks and numerous trees planted along each street.



Waverly Terrace in transition. *The Home Book*, 1917.